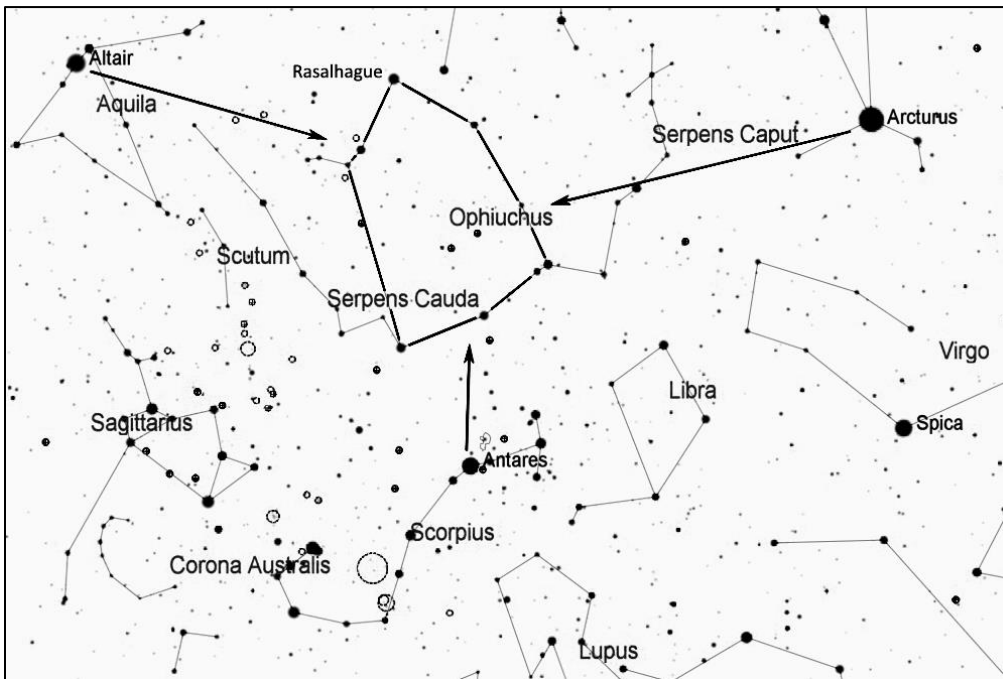


INGC 6572 (Planetary Nebula), NGC 6633, IC 4756 (Open Clusters)

This area in northern Ophiuchus and Serpens Cauda is rich in planetary nebulae and star clusters. NGC 6572 is a small but bright planetary nebula that is known for its intense blue-green color. Use high magnification for the best view. To its east are two bright open clusters, NGC 6633 and IC 4756, that are nice targets for binoculars or rich-field telescopes.



Start by finding the constellation Ophiuchus, the serpent bearer, a large oval shape that is west of Arcturus (part of the Spring Triangle), east of Altair (part of the Summer Triangle), and north of Antares. The oval is about 25 degrees from top to bottom, and its main stars are second and third magnitude, so they should be easy to see with the naked eye even with moderate light pollution.

At the top of Ophiuchus, imagine a line between the bright star Rasalhague and slightly dimmer Rasalgethi (in Hercules). Extend this line to the east about twice this distance to reach the star 72 Ophiuchi, magnitude 3.7. Then look 3 degrees to the south-southeast for blue-green NGC 6572, which will appear star-like at low power. From here, NGC 6633 is about 4 degrees to the east, and IC 4756 is another 3 degrees to the east-southeast.

